

# Asia Hub and CIAERA Annual Meeting 2024

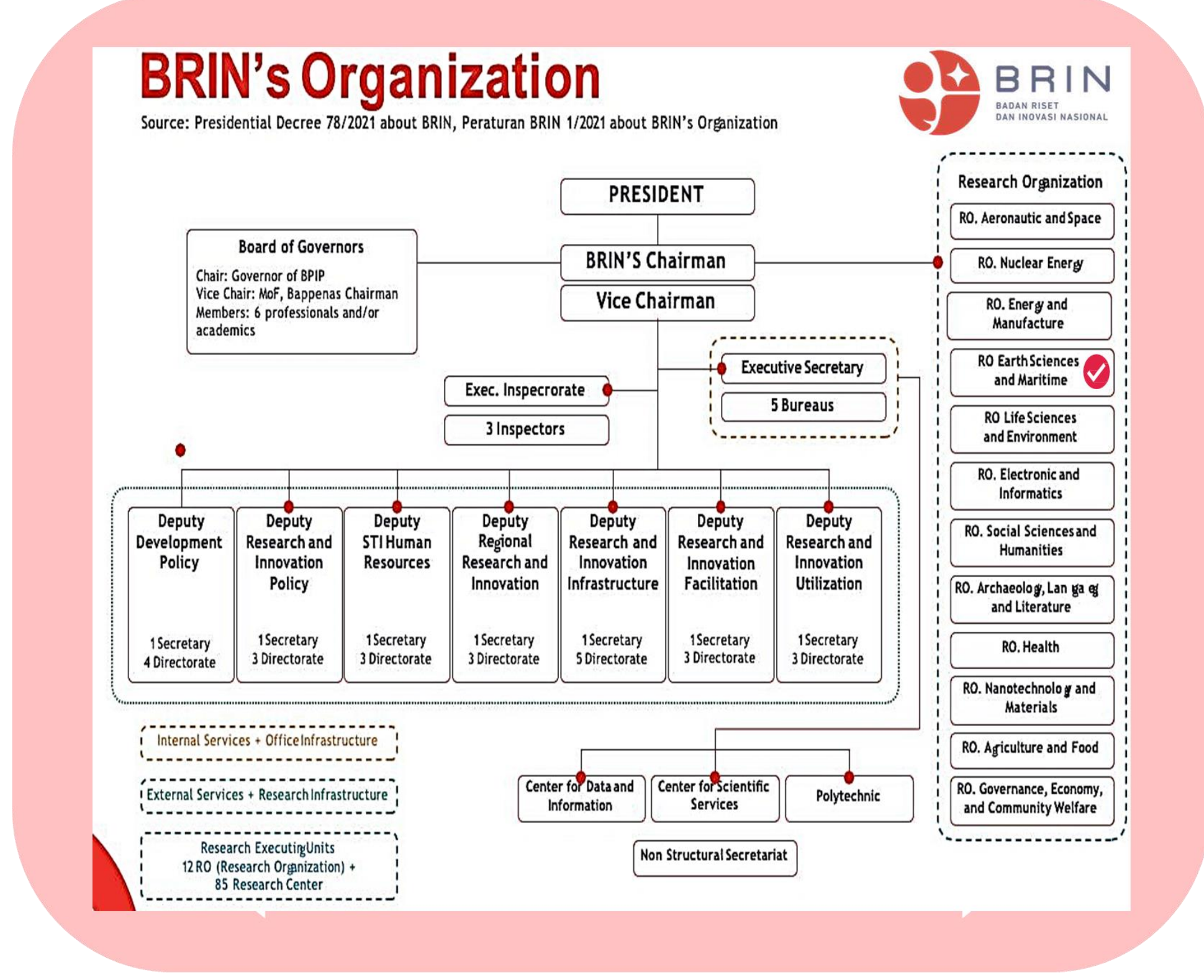
November 12-15, 2024 | Centara Riverside Hotel, Chiang Mai, Thailand



## NATIONAL RESEARCH AND INNOVATION AGENCY (NRIA/BRIN) INDONESIA

### COMPANY PROFILE

BRIN was initially a unit with the Ministry of Research and Technology (Kemenristek), however as it developed, on 5 May 2021, President Joko Widodo signed Presidential Regulation No. 33 of 2021, which effectively stipulates BRIN as the only national research body. Presidential Regulation o. 78/2021 on BRIN. This regulation stipulates that all Indonesian national research bodies such as the Indonesian Institute of Sciences (LIPI), the Agency for the Assessment and Application of Technology (BPPT), the National Nuclear Energy Agency (BATAN), and the National Institute of Aeronautics and Space (LAPAN) merge into BRIN. BRIN becomes a separate agency following the merger of BATAN, BPPT, LAPAN and LIPI as well as research institutions within ministries and institutions. Now BRIN is led by Laksana Tri Handoko, who previously led LIPI.



### LOCATION OF BRIN

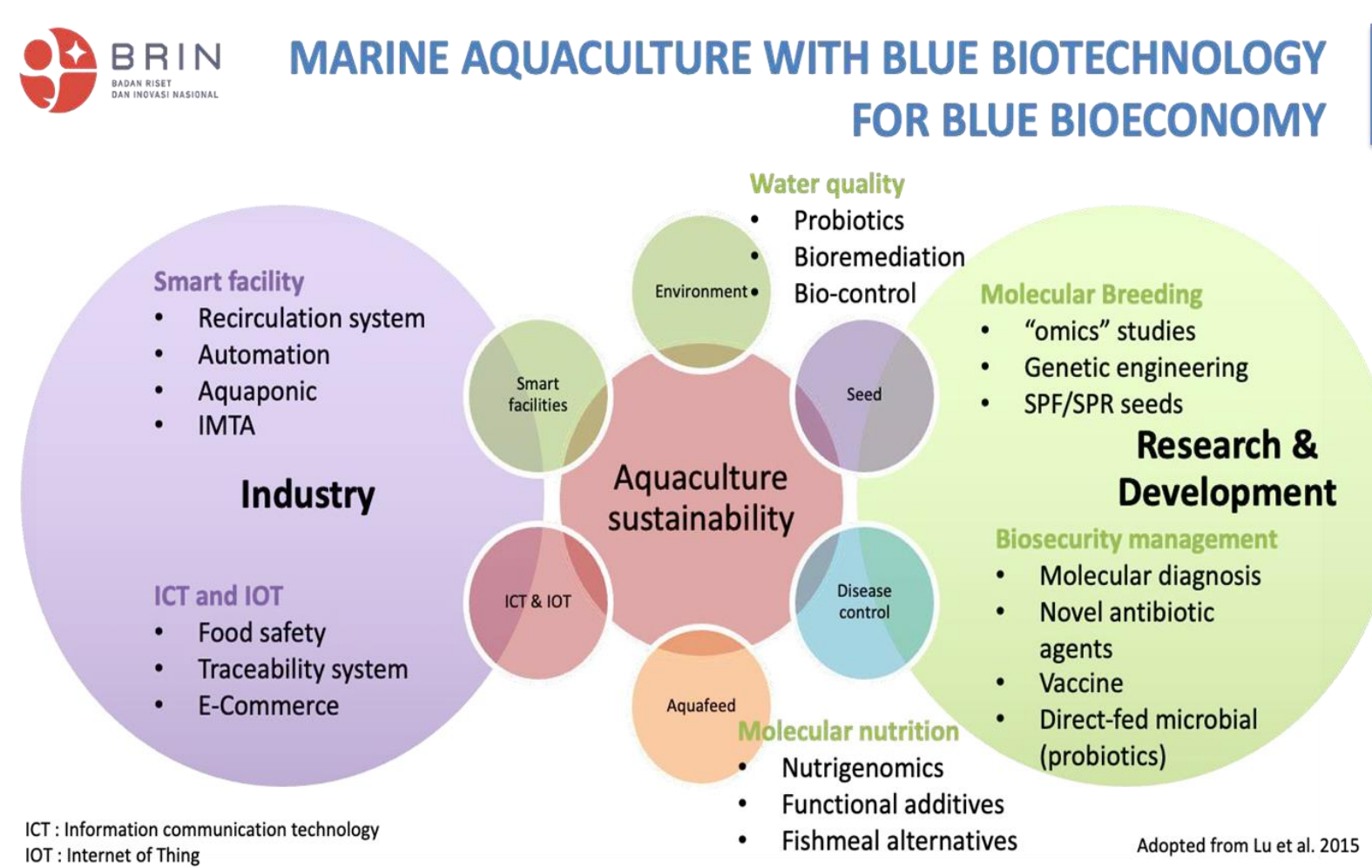
The location of BRIN in Indonesia is Jakarta, the capital city of Indonesia. However, the location of research centers is spread throughout Indonesia, mostly centered on the island of Java and some on other islands.



## RESEARCH CENTER FOR MARINE AND LAND BIOINDUSTRY

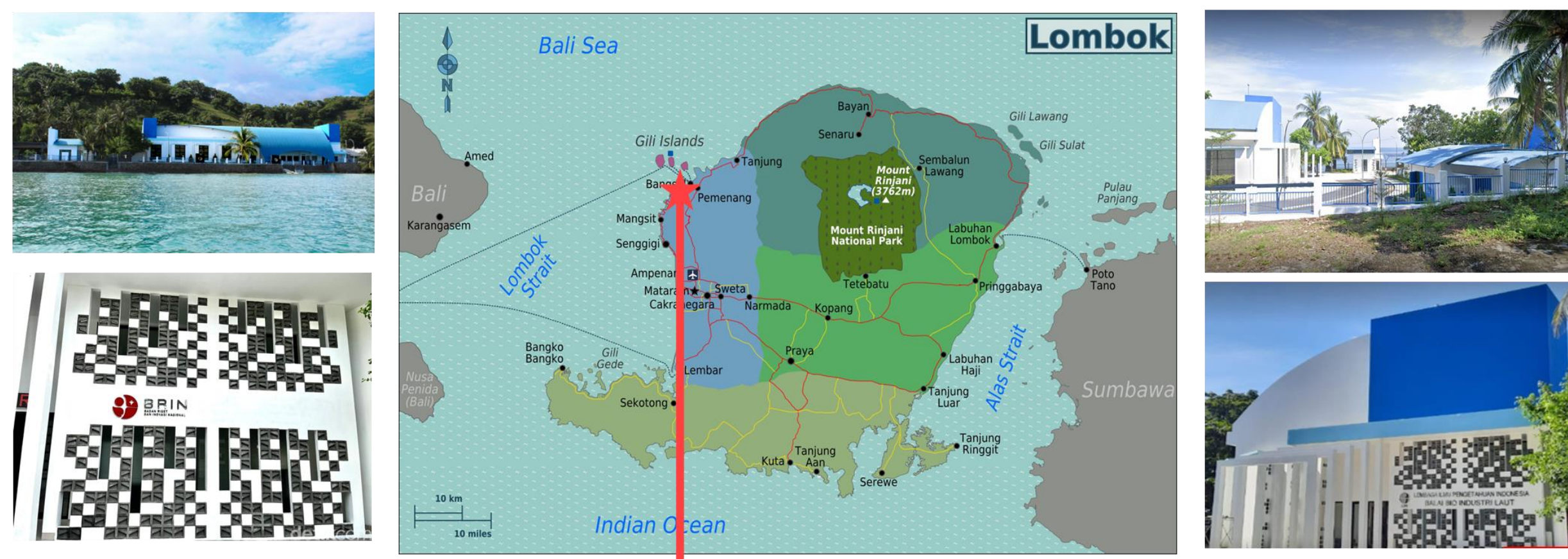
This research center is the center of excellence for product development from Indonesia's marine and freshwater resources using blue biotechnology for blue bioeconomy.

### RESEARCH SCOPES



### LOCATION OF RCMLB

Jl. Raya senggigi, Teluk Kodek, Malaka, Pemenang, North Lombok, Nusa Tenggara Barat, Indonesia.



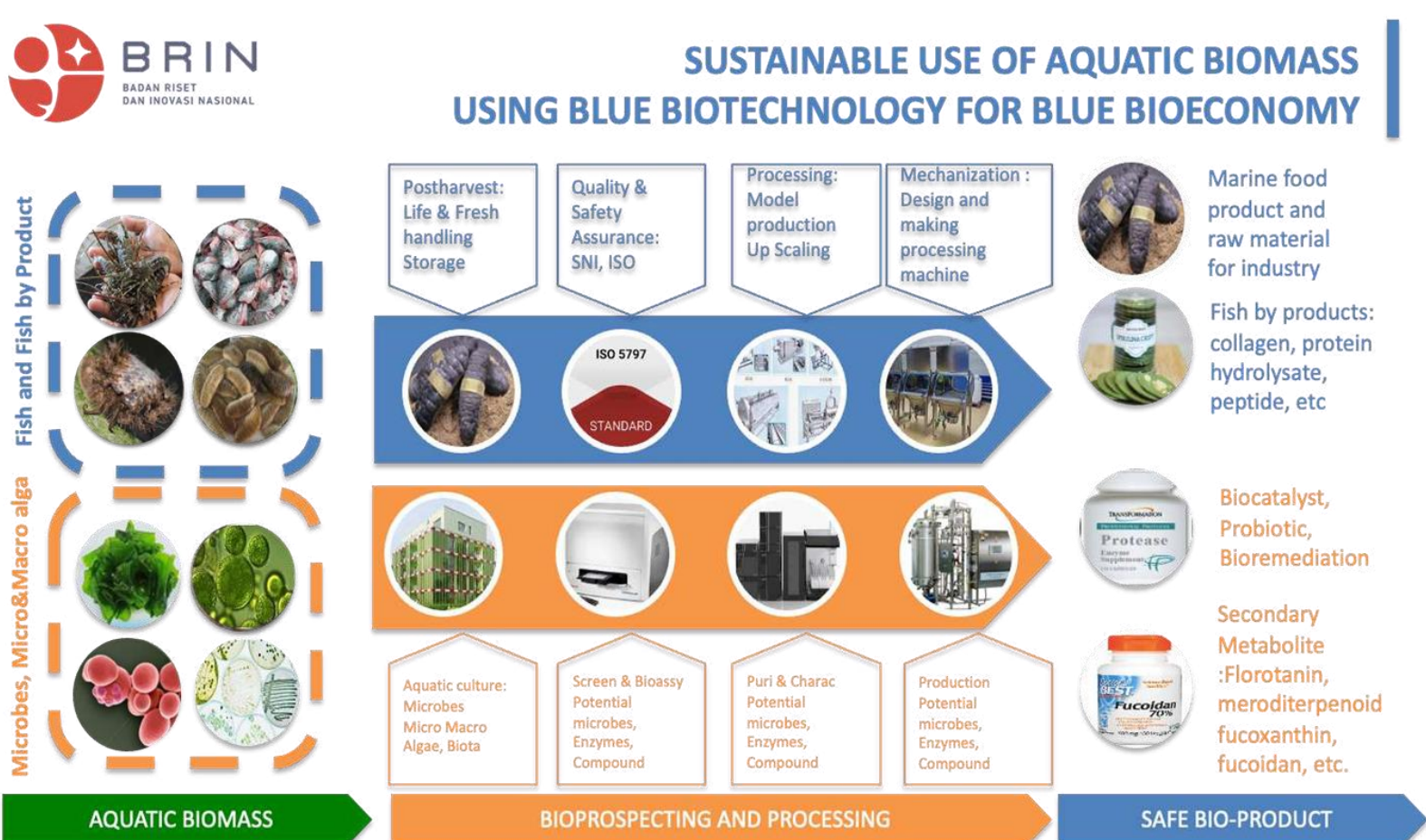
### RESEARCH FACILITIES

Indoor and outdoor aquaculture laboratory, food and feed processing laboratory, microbiology and biotechnology laboratory, diving instruments, and a boat.



### COMPANY PROFILE AND HISTORY

Before the merger became BRIN, the former name of the research center for marine and land Bioindustry was research development for the marine bioindustry under the LIPI organization (Indonesian Institute of Sciences). This research institution was built in 1997 as the first research station and observation, particularly in marine sciences, in Lombok Island, East Indonesia part region. Currently, this research center has developed dramatically with more facilities and high-quality building construction after its destruction because of a big earthquake that hit Lombok Island in 2018.



Watch on YouTube

Dien Arista Anggorowati  
E-mail: [anggorowati.da@gmail.com](mailto:anggorowati.da@gmail.com)  
[dien003@brin.go.id](mailto:dien003@brin.go.id)



## INTERNATIONAL RESEARCH COLLABORATION AND ACTIVITIES

